



ELEVATE TODAY,
MOVE TOMORROW



ZEIT Elevator CO., Ltd.

www.xielevator.com

Head Office GS E&C Seocho Tower, 2477 Nambusunhwan-ro, Seocho-gu, Seoul

Factory (Korea) 278-2 Asan Valley Dong-ro, Dunpo-myeon, Asan-si, Chungcheongnam-do

Factory (Vietnam) Lot E1, Nhon Trach 6 Industrial Zone, Long Tho Commune, Nhon Trach District, Dong Nai Province, Vietnam

Tel +82-2-1670-0917



XI ZEIT ELEVATOR

X-EL

Soaring Higher with a New Name

ELEVATE TODAY, MOVE TOMORROW

ZEIT ELEVATOR

2025 Changed company name to "ZEIT Elevator"

 **GS Elevator**

- 2021**
 - Operated Dunpo factory in Asan
 - Changed company name into GS Elevator (formerly Xi mechanics)
 - Accredited ISO 9001/14001 certificate
- 2020**
 - Established Xi mechanics (100% invested by GS E&C)

XI ELEVATOR

- 2019**
 - The first domestic construction company to enter the elevator industry
 - Launched Vietnam subsidiary (VGSI) for Xi Elevator
 - Selected as the 24th largest construction company in the world by ENR, a global construction magazine
 - Won the Korea Luxury Brand Grand Prize (Brand Apartment Category (13 consecutive years / Hall of Fame))

 **GS E&C**  **자이**


- 2005**
 - GS spin-off from LG Group and Changed company name (Formerly GS E&C)

 **LG건설**

- 1995**
 - Changed company name (Formerly LG E&C)

 **럭키개발(주)**

- 1969**
 - Founding of Lucky-Goldstar Development Co., Ltd. (formerly GS Engineering & Construction)

 **ZEIT ELEVATOR** is the new name for GS Elevator, representing our commitment to continuous challenge and innovation. We will persistently prioritize customer safety while upholding premium value and trust.

 **ZEIT ELEVATOR**

X-EL

Sense, Technology and sustainability A New Standard for Elevators

X-EL elevates everyday transportation with an elegant design that enriches spatial quality and advanced technology that ensures stability and efficiency. Focused on creating a comfortable and healthy transportation environment, X-EL envisions the space itself while taking steps toward a sustainable future through designs that consider both passengers and the environment.





X-EL MONO LINE



360° VIEW

MONO LINE

Glossy monotone and soft lighting

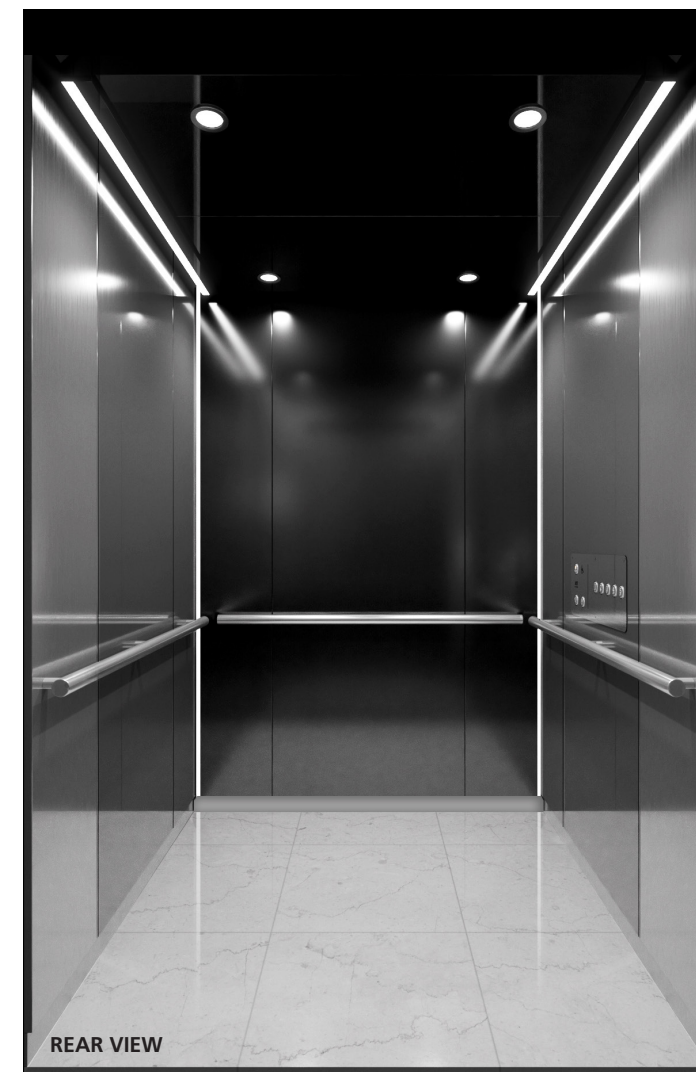


ANTIBACTERIAL STEEL PLATE

Semi-permanent sterilization
+ deodorizing and anti-fungal effect



FRONT VIEW



REAR VIEW

Car

- Ceiling GE-CL-41GL
- Car Wall BLK-GL, DGY-VIB, GRY-HL, LED Light
- Car Door GRY-HL

- Handrail STS-HL
- OPB GE-CP-21R-D
- Floor Decotile

Entrance



Main Floor

Other Floors

Top Floor (MRL)

Main Floor

Other Floors / Top Floor

- | | | |
|-------------|-----------|------------|
| • Jamb | GRY-HL | GRY-HL |
| • Transom | GRY-HL | - |
| • Hall Door | GRY-HL | GRY-HL |
| • HB | GE-HB-21R | GE-HIB-21R |
| • HOP | GE-PID-21 | - |

* The above design is a rendering image and may differ slightly from the actual product.



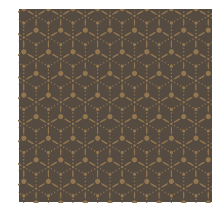
X-EL LUX ROYAL



360° VIEW

LUX ROYAL

Luxurious gold tone and sophisticated design



Pattern Detail



FRONT VIEW



REAR VIEW

Car

• Ceiling	GE-CL-51	• Handrail	STS-HL
• Car Wall	GD-PL, BRN-DECO, STS-MR	• OPB	GE-CP-21R-D
• Car Door	BRN-DECO	• Floor	Decotile

Entrance



Main Floor

Other Floors

Top Floor (MRL)

	Main Floor	Other Floors / Top Floor
• Jamb	GD-PL	GD-PL
• Transom	GD-PL	-
• Hall Door	BRN-DECO	GD-PL
• HB	GE-HB-21R	GE-HIB-21R
• HOP	GE-PID-21	-

* The above design is a rendering image and may differ slightly from the actual product.

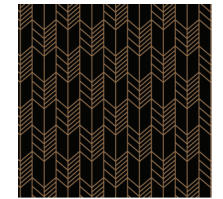


X-EL NEO NOVA

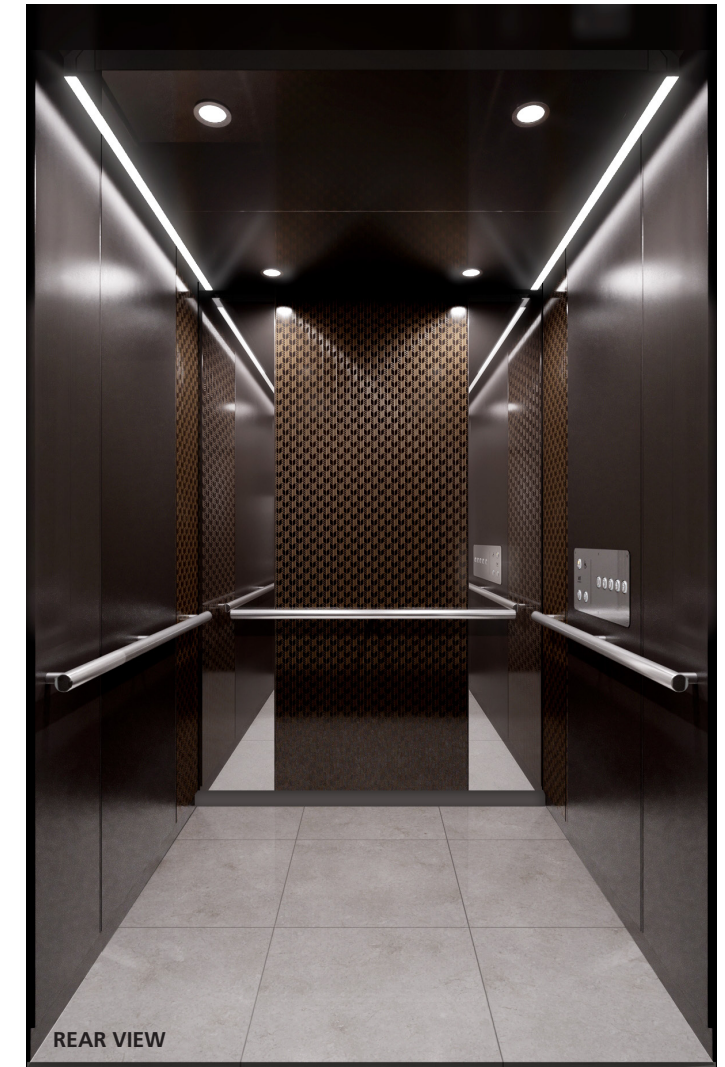


NEO NOVA

Chic black and patterned design



Pattern Detail



Car

- Ceiling GE-CL-41
- Car Wall BLK-TX, BLK-DECO, STS-MR
- Car Door BLK-DECO

- Handrail STS-HL
- OPB GE-CP-21R-D
- Floor Decotile

Entrance



Main Floor

Other Floors

Top Floor (MRL)

	Main Floor	Other Floors / Top Floor
• Jamb	BLK-TX	BLK-TX
• Transom	BLK-TX	-
• Hall Door	BLK-DECO	BLK-TX
• HB	GE-HB-21R	GE-HIB-21R
• HOP	GE-PID-21	-

* The above design is a rendering image and may differ slightly from the actual product.



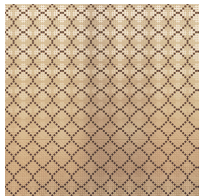
X-EL RETRO AMBER



360° VIEW

RETRO AMBER

Elegant atmosphere and emotional space



Pattern Detail



FRONT VIEW

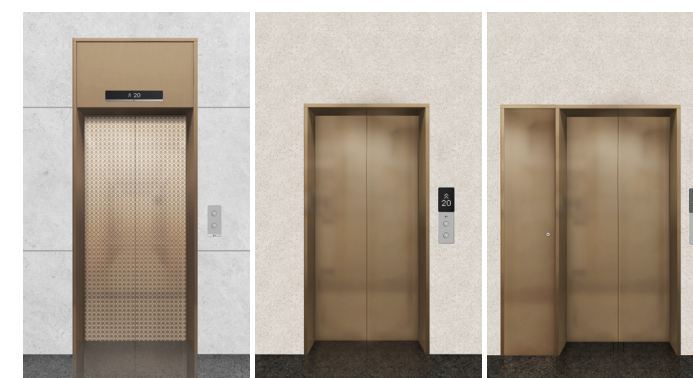


REAR VIEW

Car

- | | | | |
|------------|--------------------------|------------|------------------|
| • Ceiling | GE-CL-52 | • Handrail | STS-HL |
| • Car Wall | BRZ-PL, BRZ-DECO, STS-MR | • OPB | GE-CP-21R-D (MR) |
| • Car Door | BRZ-DECO | • Floor | Decotile |

Entrance



Main Floor

Other Floors

Top Floor (MRL)

	Main Floor	Other Floors / Top Floor
• Jamb	BRZ-PL	BRZ-PL
• Transom	BRZ-PL	-
• Hall Door	BRZ-DECO	BRZ-PL
• HB	GE-HB-21R	GE-HIB-21R
• HOP	GE-PID-21	-

* The above design is a rendering image and may differ slightly from the actual product.



X-EL URBAN GROVE



360° VIEW

URBAN GROVE

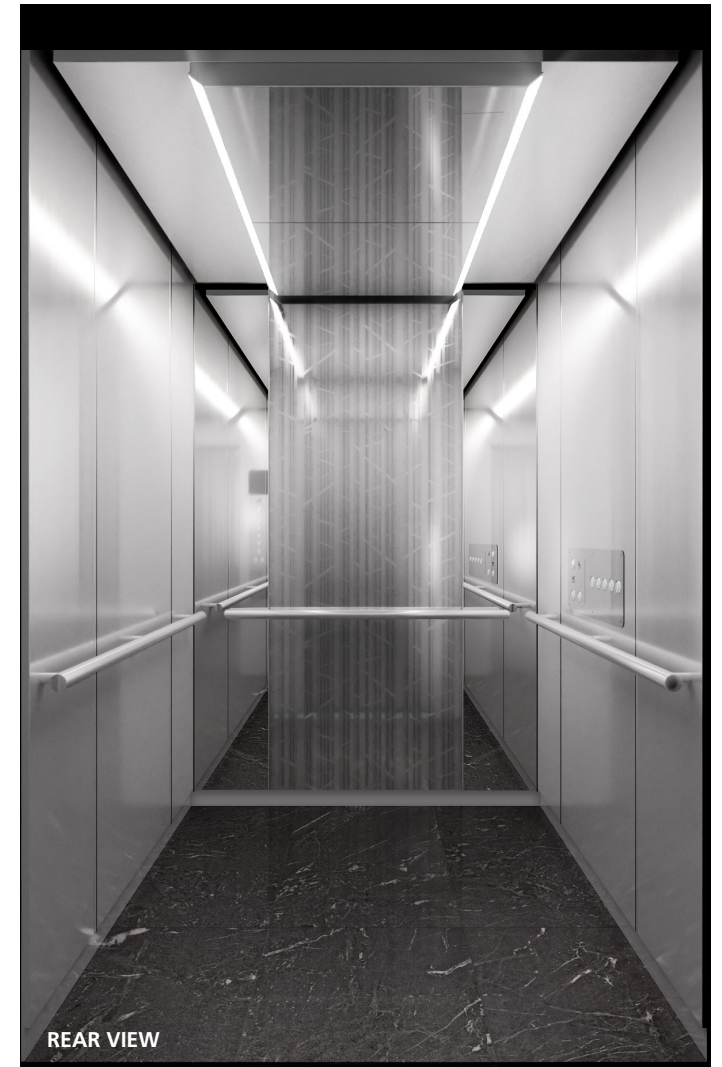
Sophisticated stainless steel and modern patterns



Pattern Detail



FRONT VIEW



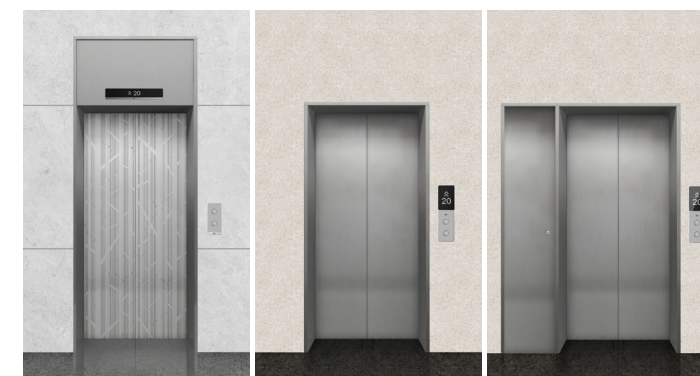
REAR VIEW

Car

- Ceiling GE-CL-53
- Car Wall STS-HL, STS-MR, SV-DECO
- Car Door SV-DECO

- Handrail STS-HL
- OPB GE-CP-21R-D
- Floor Decotile

Entrance



Main Floor

Other Floors

Top Floor (MRL)

Main Floor

Other Floors / Top Floor

- | | | |
|-------------|-----------|------------|
| • Jamb | GRY-HL | GRY-HL |
| • Transom | GRY-HL | - |
| • Hall Door | SV-DECO | GRY-HL |
| • HB | GE-HB-21R | GE-HIB-21R |
| • HOP | GE-PID-21 | - |

* The above design is a rendering image and may differ slightly from the actual product.



reddot winner 2021

Xi-Elcar was selected as Reddot Winner at the Reddot Design Awards.



* The design belongs to the GS E&C building, so it cannot be purchased.

- Hepa Filter
- UV Deodorization
- Filter Sterilization
- Fine Dust
- Ultrafine Dust
- The Volume of Air



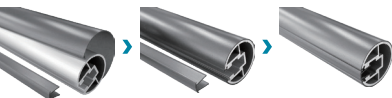
Built-in Antibacterial Air Cleaning System (Air sterilization & air purification)



Emergency Safety Button (Criminal Situation Preparedness)



Antibacterial Handrail



FIXTURES

A Type

- Round

The round design with soft curves with the display area to create a unique image



GE-CP-21R-D
LED



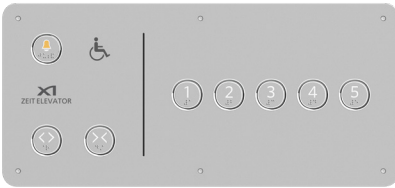
GE-CP-21R-D
LCD



GE-PID-21



GE-HCP-21R



GE-HIB-21R



GE-HB-21R



Button



B Type

- Square

A luxurious style with a clean, refined, straight-line design and soft LED lighting



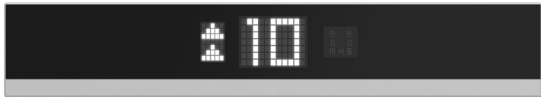
GE-CP-22S-D
LED



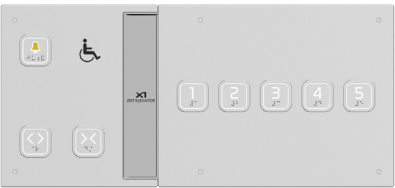
GE-CP-22S-D
LCD



GE-PID-22



GE-HCP-22S



GE-HIB-22S



GE-HB-22S



Button



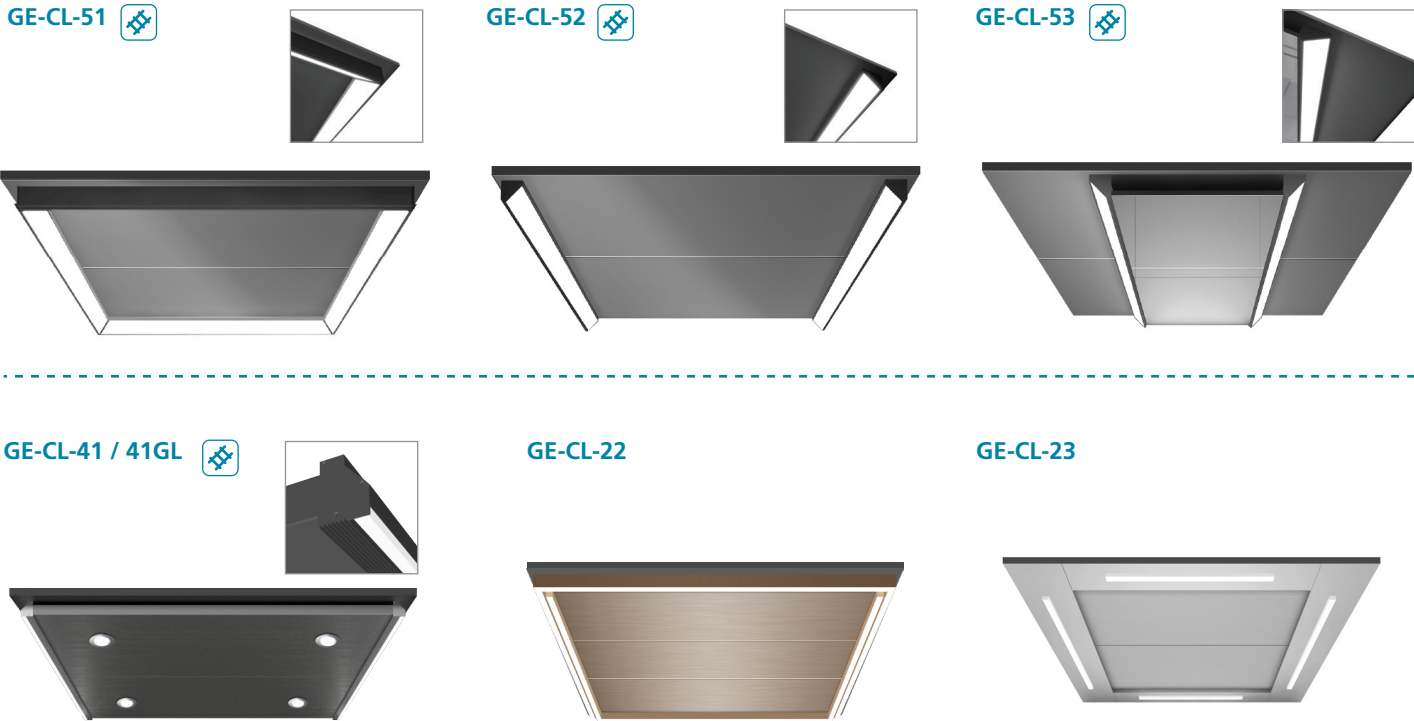
* B Type is an optional specification and incurs additional costs.

CEILING

V-Lite Series

The series of ceiling designs utilizing sensory diagonal LED modules

 * Emergency exit applicable



GE-CL-41 / 41GL 



GE-CL-22



GE-CL-23



FLOOR



GE-FL-31



GE-FL-32

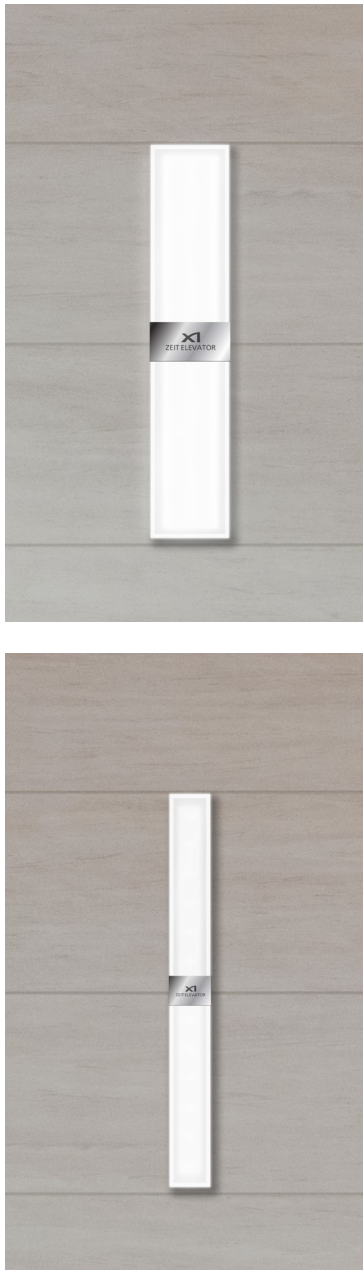


GE-FL-33



HALL LANTERN

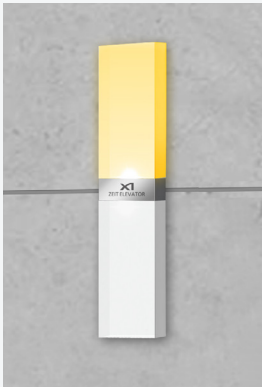
The series of ceiling designs utilizing sensory diagonal LED modules



Standard Type

LIGHT COLOR

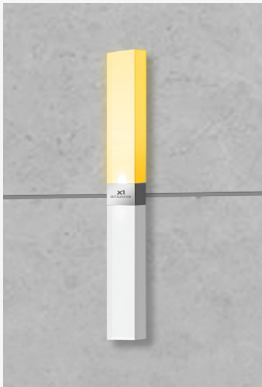
- ☐ White
- OPTION
 - ☒ Orange
 - ☐ White + Orange



Small Type

LIGHT COLOR

- ☐ White
- OPTION
 - ☒ Orange
 - ☐ White + Orange



HANDRAIL



ENTRANCE

J-311 Type (wide JAMB w/ Transom) * Ground Floor Only



J-301 Type (wide JAMB w/o Transom)

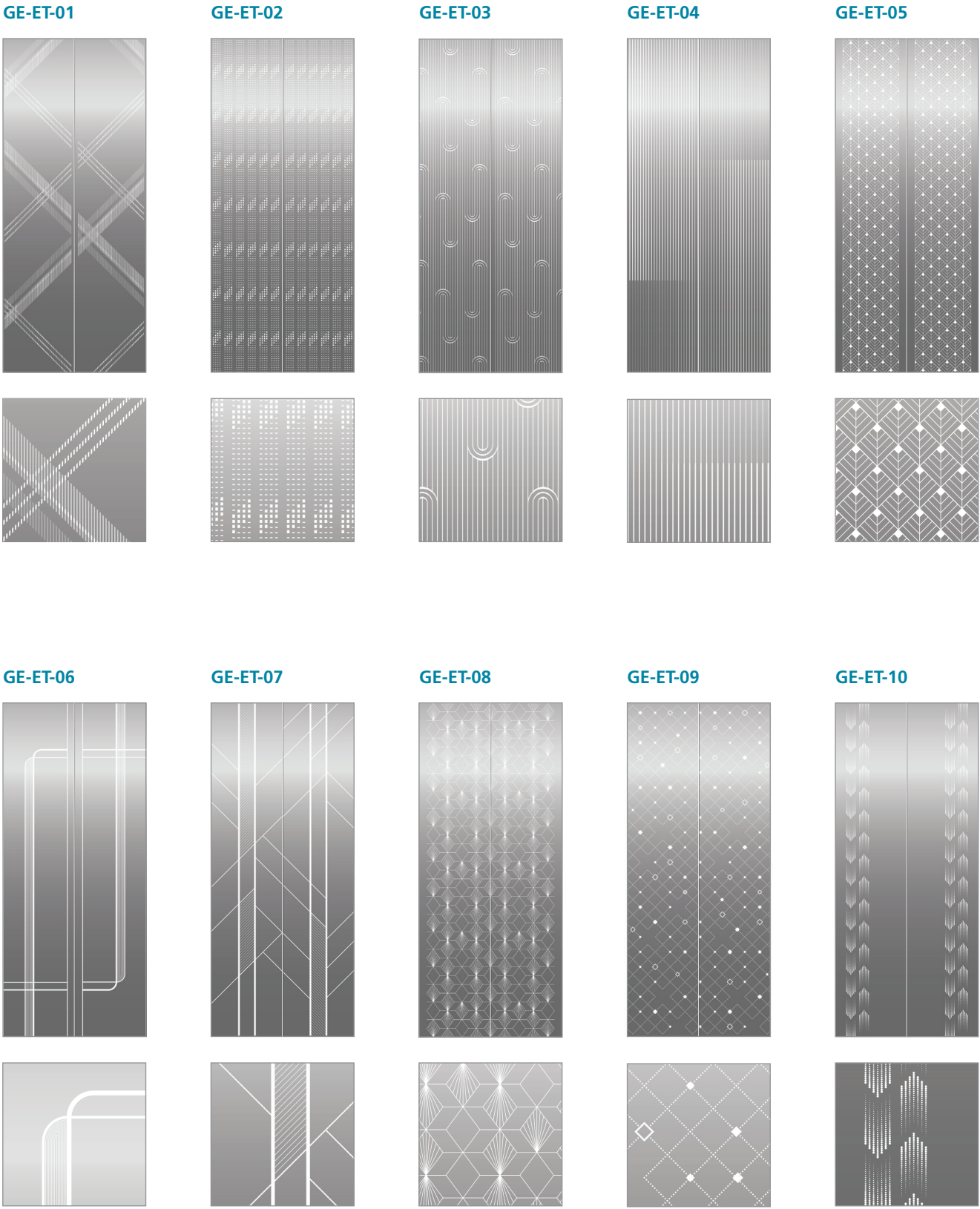


J-301 Type (narrow JAMB)



SILVER FOREST PATTERN	NOSTALGIA PATTERN	CITY BREEZE PATTERN	JAZZ BLOND PATTERN	MIDNIGHT PATTERN
Door STS Hairline(Etching 07)	Door STS Hairline(Etching)	Door STS Hairline(Etching)	Door STS Hairline(Etching)	Door STS Mirror(Etching)
Jamb STS Hairline	Jamb STS Hairline	Jamb STS Hairline	Jamb STS Hairline	Jamb STS Mirror

PATTERN (ETCHING)



ECO CLEAN SYSTEM

Air Purifier

It effectively eliminates fine dust and various types of household dust within the elevator, ensuring a pleasant air quality.









H13 grade
Hepa Filter



Removes
99.97%
of fine dust



Ventilation
System



Energy
Saving

Antibacterial handrail

Nickel-plated antibacterial handrail features a permanent 99.9% antibacterial function, providing peace of mind by eliminating concerns about bacteria.







Antibacterial function
Virus, Bacteria Eradication
and Prevention



Excellent durability
Surface white copper
+ inner stainless steel



MR Machine Room

Pers ons	Load (kg)	Speed (m/min)	OP / EH (Center Open)	Car insize (CA x CB)	Car outsize (CW x CD)	Hoistway Size (HW x HD)	Machine Room Size (MW x MD x MH)	Overhead (mm)	PIT (mm)
6	450	60	800 / 2100	1250 x 1000	1300 x 1165	1800 x 1650	2000 x 3500 x 2500	4200	1300
		90						4300	1400
		105						4400	1500
		120						4600	1700
7	550	60	800 / 2100	1200 x 1150	1250 x 1315	1900 x 1600	2000 x 3500 x 2500	4200	1300
		90						4300	1400
		105						4400	1600
		120						4600	1700
8	630	60	800 / 2100	1200 x 1250	1250 x 1415	1900 x 1650	2000 x 3600 x 2500	4200	1300
		90						4300	1400
		105						4400	1600
		120						4600	1700
9	700	60	800 / 2100	1200 x 1350	1250 x 1515	1900 x 1700	2000 x 3700 x 2500	4200	1300
		90						4300	1400
		105						4400	1600
		120						4600	1700
10	750	60	800 / 2100	1200 x 1450	1250 x 1615	1900 x 1800	2000 x 3800 x 2500	4200	1300
		90						4300	1400
		105						4400	1600
		120						4600	1700
12	900	60	900 / 2100	1600 x 1350	1650 x 1515	2200 x 1700	2300 x 3750 x 2500	4200	1300
		90						4300	1400
		105						4400	1600
		120						4600	1700
13	1000	60	900 / 2100	1600 x 1400	1650 x 1565	2200 x 1750	2300 x 3850 x 2500	4200	1300
		90						4300	1400
		105						4400	1600
		120						4600	1700
15	1150	60	1000 / 2100	1800 x 1400	1850 x 1565	2500 x 1750	2500 x 3850 x 2500	4200	1300
		90						4300	1400
		105						4400	1600
		120						4600	1700
18	1350	60	1000 / 2100	1800 x 1700	1850 x 1865	2650 x 2100	2600 x 3950 x 2600	4500	1400
		90						4700	1500
		105						4800	1600
		120						4900	1700
21	1600	60	1100 / 2100	2000 x 1700	2050 x 1865	2850 x 2100	2900 x 4050 x 2900	4500	1400
		90						4700	1500
		105						4800	1600
		120						4900	1700
24	1800	60	1100 / 2100	2000 x 1800	2050 x 1965	2900 x 2200	2900 x 4050 x 2900	4500	1400
		90						4700	1500
		105						4800	1600
		120						4900	1700

[NOTE]

- 1. When applying CWT emergency stop device, please contact us as the size of the elevator (Overhead, Pit, etc) needs to be modified.
- 2. Please contact us for Side open type because the above specifications apply only to the Center open type.
- 3. Please install ventilation windows, fans, and air conditioners if necessary to keep the machine room temperature at 5~40℃ and humidity below 90%. Please note that do not to generate toxic gas, dust, etc. (Ventilation windows should be composed of overapping windows and gallery windows, and are Building work).
- 4. Maximum available traveling height : 80m
- 5. Please contact us when applying fire doors.

Speed (m/min)	Load (kg)	Overhead (mm)	PIT (mm)	Machine Room Height (mm)	Speed (m/min)	Load (kg)	Overhead (mm)	PIT (mm)	Machine Room Height (mm)
60	450 ~ 1150	4200	1300	2500	60	1350 ~ 1800	4500	1400	2600 ~ 2900
90		4300	1400		90		4700	1500	
105		4400	1600		105		4800	1600	
120		4600	1700		120		4900	1700	

[NOTE]

- 1. Based on 2300mm interior height of car / If the interior height is increased, the overhead dimensions will be increased as well.
- 2. If the traction machine support is a double protect vibration structure, the height of the machine room is increased by 200mm from the above dimensions.

ENTRANCE PLAN

FRONT VIEW

J-311 TYPE

J-201, 101 TYPE

ENTRANCE CONSTRUCTION

J-311 TYPE

J-201, J-101 TYPE

HOISTWAY PLAN

MRL Machine Room less

Pers ons	Load (kg)	Speed (m/min)	OP / EH (Center Open)	Car insize (CA x CB)	Car outsize (CV x CD)	Hoistway Size (HW x HD)	Overhead (mm)	PIT (mm)
6	450	60	800 / 2100	1100 x 1150	1150 x 1315	1750 x 1600	4200	1300
		90					4300	1400
		105					4400	1500
7	550	60	800 / 2100	1200 x 1150	1250 x 1315	1900 x 1600	4200	1300
		90				1900 x 1650	4300	1400
		105					4400	1500
8	630	60	800 / 2100	1200 x 1250	1250 x 1415	1900 x 1600	4200	1300
		90				1900 x 1650	4300	1400
		105					4400	1500
9	700	60	800 / 2100	1200 x 1350	1250 x 1515	1900 x 1700	4200	1300
		90					4300	1400
		105					4400	1500
10	750	60	800 / 2100	1200 x 1450	1250 x 1615	1900 x 1800	4200	1300
		90					4300	1400
		105					4400	1500
12	900	60	900 / 2100	1600 x 1350	1650 x 1515	2200 x 1700	4200	1300
		90					4300	1400
		105					4400	1500
13	1000	60	900 / 2100	1600 x 1400	1650 x 1565	2200 x 1750	4200	1300
		90					4300	1400
		105					4400	1500
15	1150	60	1000 / 2100	1800 x 1400	1850 x 1565	2500 x 1750	4200	1300
		90					4300	1400
		105					4400	1500
16	1200	60	1000 / 2100	1800 x 1500	1850 x 1665	2500 x 1850	4200	1300
		90					4300	1400
		105					4400	1500
17	1275	60	1000 / 2100	1800 x 1600	1850 x 1765	2500 x 1950	4200	1300
		90					4300	1400
		105					4400	1500
18	1350	60	1000 / 2100	1800 x 1700	1850 x 1865	2650 x 2100	4500	1400
		90					4700	1500
		105					4800	1600
21	1600	60	1100 / 2100	2000 x 1700	2050 x 1865	2850 x 2100	4500	1400
		90					4700	1500
		105					4800	1600
24	1800	60	1100 / 2100	2000 x 1800	2050 x 1965	2900 x 2200	4500	1400
		90					4700	1500
		105					4800	1600

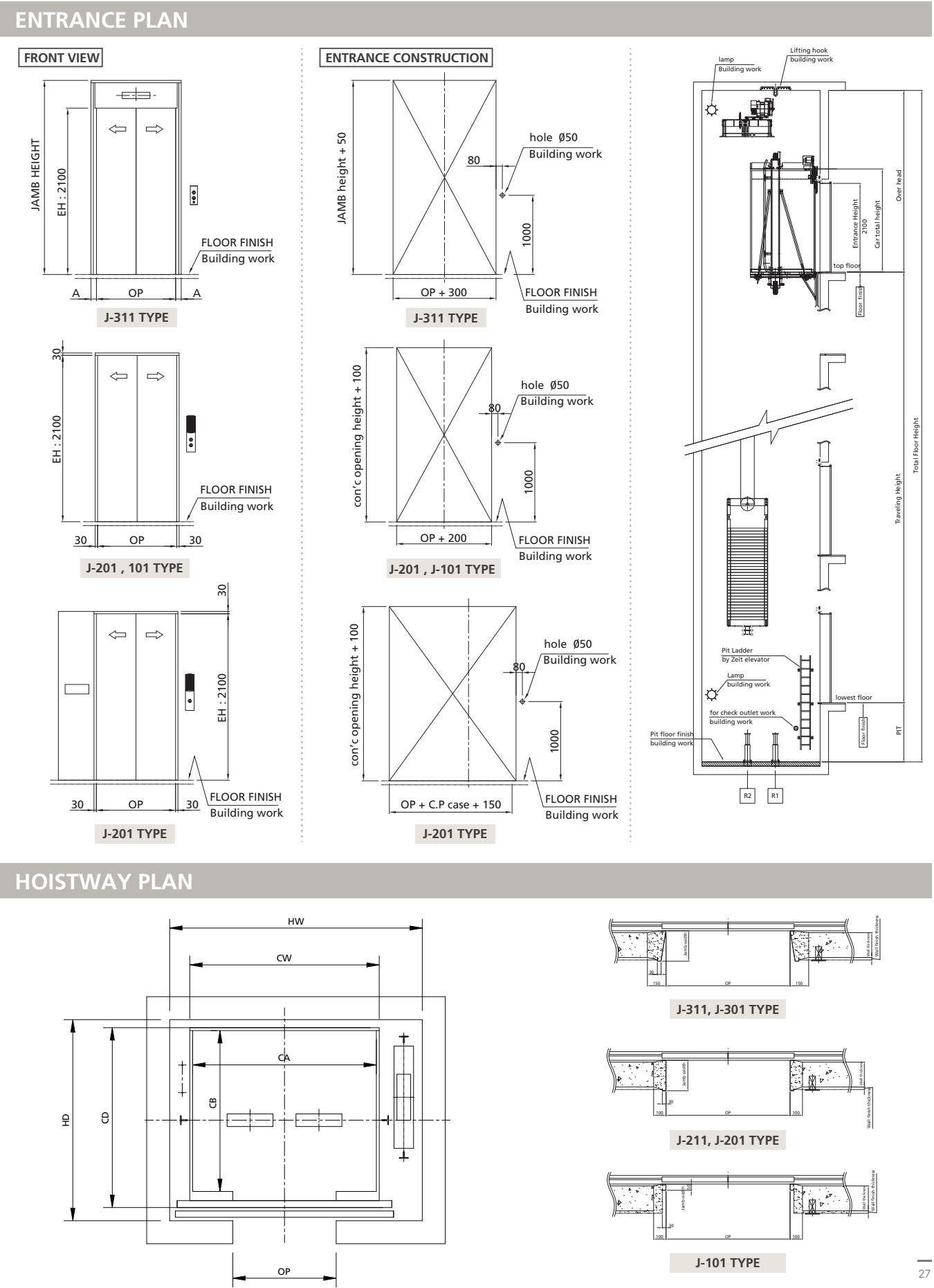
[NOTE]

- 1. When applying CWT emergency stop device, please contact us the size of the elevator(O.H, Pit, etc.) needs to be modified.
- 2. Please contact us for Side open type because the above specifications apply only to the Center open type.
- 3. Maximum available traveling height: 80m.
- 4. Please contact us when applying fire door.

Speed (m/min)	Load (kg)	Overhead (mm)	PIT (mm)	Speed (m/min)	Load (kg)	Overhead (mm)	PIT (mm)
60	450 ~ 1275	4200	1300	60	1350 ~ 1800	4500	1400
90		4300	1400	90		4700	1500
105		4400	1500	105		4800	1600

[NOTE]

- 1. Based on 2300mm interior height of car / If the interior height is increased, the overhead dimension will be increased as well.



CONSTRUCTION WORK

Works by Others
The works below are not included in the elevator installation work and should be carried out by building contractors in accordance with our drawings, relevant international codes and regulations.

[HOISTWAY]

- A property framed and enclosed hoistway, including any ventilation as required by the governing code or authority.
- A dry pit constructed to the elevator manufacture’s specifications to reinforce or sustain any vertical forces on the guide rails impacted loads from the car and counterweight buffers.
- A metal sill angle or concrete haunch across the full width of the hoistway at each elevator landing.
- Provision of steel bars to fix jamb around the entrance of each floor.
- All cutting, including cutouts to accommodate hill signal fixtures, patching, painting of walls, floors, partitions, together with finish painting of entrance doors and frames, if required.
- Provision of entrance or ladder for pit access.
- Supply and installation of fascia plate.
- Installation of emergency exits and electric wiring in blind sections of hoistway where required.
- The tolerance of perpendicular line over the whole hoistway height must not exceed ±30mm.
- A waterproof outlet and light in the elevator pit area with the light switch being located adjacent the access door or ladder.
- The receptacles shall have protection for ground fault circuit interrupter.
- Provision of wiring between controller and building management system.
- A construction hoisting beam or hook, if required, with the correct location and size as determined by the elevator contractor for each hoistway.
- Noise insulation should be installed between machine room and adjacent residential area.

[MACHINE ROOM] - Excluding MRL (Elevator without machine room)

- A suitable machine room with legal access, ventilation and concrete floor.
- The size of entrance shall be minimum 1000 mm(W) x 2000 mm(H).
- Installation of lead-in wire and earth wire between building main power board and room incoming distribution board. However, machine room lighting source supply shall be install separately.

[MISCELLANEOUS]

- Wiring and piping between monitoring systems.
- Hoistway shall be free of dust of harmful gas.
- All electric power for lighting, tools, welding and etc. during installation.
- All single phase receptacles installed in pit and machinery spaces shall have ground fault circuit interrupter protection.
- Fire detector for fire emergency operation.
- A secured area for storage of elevator equipment and materials during installation.

FUNCTIONS

Standard

1	Full selective run feature	21	Check button Adhesion
2	Door close time setting	22	Automatic compensation of starting torque
3	Door service floor settings	23	Number of runs
4	Door control selection	24	Run time recording
5	Floor display setting	25	The parking base station can be changed
6	Light curtain protect	26	VIP service
7	Independent control of front and rear doors	27	Overload protect
8	Repeat closing	28	Five-way intercom
9	Instruction independent	29	UCMP
10	Voice station	30	Door bypass function
11	Leveling adjustment	31	Arrival Gong
12	Automatic leveling without debugging	32	Motor overheat protect
13	Acceleration Interception Response	33	Level Switch touch inspect
14	Idle Homing	34	Overspeed protect
15	Station change	35	Low speed protect
16	call cancel (car/hall)	36	Reverse running protect
17	Service floor setting	37	Anti-slide protect
18	Driver operation	38	Safety relay touch inspection
19	Low-speed self-speed	39	Elevator standby at different positions
20	Car arrival gong	40	Fine adjustment after level
		41	Voice announcement

Option

1	Open door holding	11	Group control
2	Nudging	12	Auto rescue device
3	Prediction arrival hall lights	13	Surge protective device
4	Arrival light/gong n landing hall	14	Auxiliary Operation panel
5	Car I / O extension	15	Rear wall operation panel
6	Re-level when door open	16	Handicapped person operation panel
7	Emergency return when fire	17	Residential area monitor
8	Firefigther operation		
9	Door open holding function		
10	Earthquake function		